

## **Study Guide #9: The Antichrist Prophecies, Part III**

### **Introduction**

Please read Explorer III, Study Guides #7 and #8 because they were designed to prepare you for *this* Study Guide. In this last Study Guide on the Antichrist prophecies, we examine the prophetic chapters of Revelation 13 and 17 in the context of our two previous Study Guides on this topic. Read Revelation 13 before studying this Study Guide.

### **Question #1: What do we know about the sea monster mentioned in Revelation 13:1-2?**

**Answer:** *First*, we know that it's a symbolic beast because of its description as having 7 heads and 10 horns. *Second*, we remember from Explorer III, Study Guide #8 that a symbolic beast represents a kingdom (a political power). *Third*, we know its description as a composite beast looking like (a) a leopard, (b) a bear, and (c) a lion is in the reverse order of the 1<sup>st</sup> 3 symbolic beasts in Daniel 7. *Fourth*, we know from the rest of Revelation 13 that this beast is (a) worshipped (vv. 4, 8, 12, 15) and is (b) guilty of blasphemy (vv. 1, 5-6), which makes it also a *religious* power. Therefore, we conclude that the sea monster here is a different representation of what the little horn in Daniel 7 is. See Explorer III, Study Guide #8 for the evidence for our conclusion that this power is Papal Rome, the hierarchy of the Roman Catholic Church. [NOTE: Scripture's warning is focused on the *institution* of the Roman Catholic Church, not at its members, millions of whom who will surely be saved in the kingdom.]



### **Question #2: Is the 4<sup>th</sup> beast of Daniel 7 mentioned in Revelation 13?**

**Answer:** The 4<sup>th</sup> beast of Daniel 7 is not explicitly mentioned in Revelation 13. However, Revelation 13:2, 4, refers to “**the dragon**,” which does rather fit the description of the 4<sup>th</sup> beast in Daniel 7. It's true that Revelation 12 calls Satan “**the dragon**” (vv. 4, 7). But since Revelation 13:2 says that the “**dragon gave him [sea monster] his power, his throne, and great authority**” (NKJV), the dragon here must refer to a political kingdom which Satan used to give those things to the Antichrist. Moreover, the description of the sea monster as having 7 heads and 10 horns would be incomplete without the dragon representing the 4<sup>th</sup> beast from Daniel 7; with it, the sea monster has the same number of heads and horns as the 4 beasts in that chapter. Therefore, we conclude that the political dimension of the dragon in Revelation 13 represents pagan Rome.

### Question #3: How did the Roman Empire give the Papacy his power, throne, and great authority?

**Answer:** A “**throne**” amounts to a capital city, which only another political power can give to someone else—not Satan as an individual being. When Emperor Constantine, the 1<sup>st</sup> so-called Christian emperor, moved the capital of the empire from Rome to the new city of Constantinople (modern Istanbul, Turkey) in A.D. 330, the center of political gravity in the empire shifted eastward and left a power vacuum that the Papacy filled by assuming greater civil as well as religious authority in the former Western Roman Empire. As the bishop of Rome, the Pope naturally made the city his and the Church’s capital, and he officiated from the chair of the former emperors. Most of the Roman emperors after the fall of Rome (A.D. 476), in Constantinople, supported Papal authority with troops and helped defeat its political *and* religious enemies.

### Question #4: Will the Antichrist only appear at the very end-time of history?

**Answer:** See Explorer III, Study Guide #7 for evidence that the Antichrist is a counterfeit Christian power and Explorer III, Study Guide #8 that it will exist for 1,260 *years* during the Christian Era. Revelation 13 echoes the time period as “**forty-two months**” (v. 5)—which Explorer III, Study Guide #8 equated with 1,260 years—and provides additional information. Since the Roman Empire gave the Papacy its *initial* start with a capital city, power, and authority (see Questions #2 and #3), and a 2<sup>nd</sup> beast (a lamb-like beast) elevates it to a global level in the mark of the beast crisis (vv. 11-18) at the end-time, it’s evident that there are 2 phases of the Papacy’s dominance. Indeed, the 2nd beast boosts the Papacy after a “**deadly wound was healed**” (v. 12, NKJV) by a “**sword**” (v. 14). Verse 10 has the enigmatic statement that “**he who kills with the sword must be killed with the sword**” (NKJV). All of this evidence tells us that the 1<sup>st</sup> phase ends with the deadly wound, so that the 2 phases are (1) Phase I, which would last for 1,260 years (because the *end-time* phase couldn’t last that long); and (2) Phase II, which will last for an undefined but short period of time.

### Question #5: What was the “deadly wound,” and what are the beginning and ending years for the period of 1,260 years of Phase I of the Papacy’s power?

**Answer:** Revelation 13:10 reads, “**He who leads into captivity shall go into captivity; he who kills with the sword must be killed with the sword**” (NKJV). According to Jeremiah 15:2 and 43:11, similar language as this describes God’s judgment in which He uses a military force. Of course, the Papacy is an institutional power. Since it would be redundant to say that such a power will be *figuratively* killed *and* taken captive, logic suggests that it means that its head, the Pope, would be literally *captured* at the same time the Papacy as an *institution* will be *figuratively killed* (or nearly killed).



General Berthier taking  
Pope Captive

The only time in the history of the Papacy that its Pope was captured by a military force while simultaneously the institution of the Papacy was temporarily “killed” was when in early 1798, Napoleon’s General Berthier’s troops took the Pope captive and issued orders that the Papacy, in effect, was dead. Although the Papacy was restored 3 years later, it didn’t obtain its own independent state for a capital until the Lateran Treaty in 1929 under Italian leader Mussolini. Since

1798 marks the end of the 1,260-year period of Phase I, then its beginning date was 538. Therefore, the 1,260-year reign of the Papacy mentioned in Daniel 7 (as 3 ½ times) and in Revelation 13 (as 42 months) was the period of A.D. 538-1798.

### **Question #6: Does Daniel 7 offer any clues concerning the beginning of the little horn's reign there—which we now know described its 1,260 years of Phase I?**

**Answer:** Daniel 7:8, 24 states that the little horn would defeat 3 of the 10 horns on the 4<sup>th</sup> beast—that is, 3 of the kingdoms that rose to prominence after the fall of Rome. See Explorer III, Study Guide #8 for evidence of this. The close relationship between Daniel 7:24 and 25 strongly suggests that the time period for the little horn's dominance would begin with the defeat of those 3 tribes. Historically, while more than 3 of the so-called barbarian tribes were defeated at one time or another during the age when Rome was weakening or had fallen, the Heruli (in 493), the Vandals (in 534), and the Ostrogoths (in 553 or 554) were defeated by the Empire on behalf of the Papacy, in part because those 3 tribes opposed the Papacy's theology on the Trinity.

Although neither the 553 nor 554 date allows for 1,260 years until 1798, the Ostrogoths were decimated when their siege of Rome was broken in 538. When comparing this event to the later experience of the Papacy, it was clearly the major turning point for both the Ostrogoths (downhill) and the Papacy (on the rise). Beginning in 538, the Papacy was relatively, and more or less consistently, free to exercise greater civil influence and religious authority over the former Western Roman Empire. As such, 538 is a reasonable date for the beginning of the 1,260-year prophecy.

### **Question #7: What kind of “beast” is the one mentioned in Revelation 13:11?**

**Answer:** Revelation 13:11 reads, “Then I saw another beast coming up out of the earth, and he had two horns like a lamb and spoke like a dragon” (NKJV). *First*, note that this is a symbolic beast because a real lamb can't speak and certainly not as a dragon. As a symbolic beast, it's a political nation or power (see Explorer III, Study Guide #8 for the evidence). *Second*, although this nation engages in religious activity (see vv. 12-18), and it's later called the “false prophet” (16:13, NKJV; cf. 19:20), it's *only* to enforce worship of the sea monster, not worship of itself. Also, it's *not* said to be guilty of the religious sin of blasphemy. Therefore, this nation is *only* a political nation, *not* also a religious institution.



### **Question #8: What evidence is there that this nation would be a young one?**

**Answer:** There are at least 2 kinds of evidence that this 2<sup>nd</sup> beast in Revelation 13 would be relatively young. *First*, the form of the verb for “coming up” in verse 11 places the emphasis on the apostle John seeing (in vision) this nation in the process of arising. *Second*, the expression “two horns like a lamb” (v. 11) also points to a young, emerging nation. The only clue as to when this nation might emerge is the immediate context's reference to the deadly wound of the 1<sup>st</sup> beast, which we dated to 1798. Therefore, this particular nation should be rising up in the late 18<sup>th</sup> century relatively close to 1798. Another thought

is this: If this nation arose about that time, and it's pictured as young when it exercises its global power, then we must be living relatively near the time when the mark of the beast crisis will occur.

### **Question #9: Does the word “lamb” have any significance for identifying this nation?**

**Answer:** The usage of the word “Lamb” or “Lamb’s” in Revelation is so numerous that there must be another meaning for this beast/nation besides its youthfulness. Excluding Revelation 13:11, these words occur 28 times in Revelation, where it always and incontrovertibly refers to Jesus as the Lamb of God. We should infer from this that the nation described in Revelation 13:11-18 is one whose majority population at least nominally claims Christianity in some form. [NOTE: This fact reinforces our view that the sea monster is a political-religious power that claims Christianity, because it would hardly be expected that a nation whose majority population professes Christianity would support a Christian power to the degree that this one will unless that power were also professedly Christian.]

### **Question #10: Is there any significance to the fact that this nation arises “out of the earth” (Revelation 13:11, NKJV)?**

**Answer:** Yes. Although the word “earth” is often used to represent the entire planet, in this section of Revelation, it's used in a special restrictive sense. [NOTE: There's an obvious connection between Revelation 12 and 13 since both refer to the same time period identified as the 1,260 years, in 12:6, 14; 13:5.] According to Revelation 12:13-16, already shown in Explorer III, Study Guide #8 to refer to the



Desolate Region

middle period of the Christian Era, **“the earth helped the woman, and the earth opened its mouth and swallowed up the flood which the dragon had spewed out of his mouth”** (v. 16, NKJV). Note also that in chapter 13, the **“earth”** is contrasted with the **“sea,”** from which the 1<sup>st</sup> beast of Revelation 13 arose. This is very unlikely to all be simply a coincidence. Therefore, 12:16 indicates that the **“earth”** represents a friendly area and/or certain movements that assisted the pure Church in its “wilderness wandering” during the long period of Papal supremacy. And in 13:11, with its more immediate contrast with the beast from the **“sea,”** the **“earth”** would represent a relatively sparsely populated area in which that nation would arise. [NOTE: This is true because the **“sea”** and other waters symbolically represent peoples, multitudes, and nations, according to Psalm 65:7; Isaiah 8:7; 17:12-13; Jeremiah 46:8; 47:1-2; and Revelation 17:15.]

### **Question #11: Does the word “earth” have any further significance here?**

**Answer:** The evidence from Question #10 tells us that this nation was initially a safe haven for those Christians persecuted by Papal Rome. Therefore, its population's brand of Christianity must have been mostly Protestant, at least in its early years. This is especially true given the fact that this was an era (late 18<sup>th</sup> century until the late 20<sup>th</sup> century) when Protestants and Catholics were quite suspicious of each other. Thus, if the nation's people were mostly Catholic, it would not have provided a safe haven for persecuted Protestants.

## Question #12: Do verses 12-18 of Revelation 13 tell us anything else of import?

**Answer:** Yes. Those verses describe a nation that will use great economic *and* political coercion to enforce the global worship of the Papal system. Only a global superpower could accomplish anything so huge.

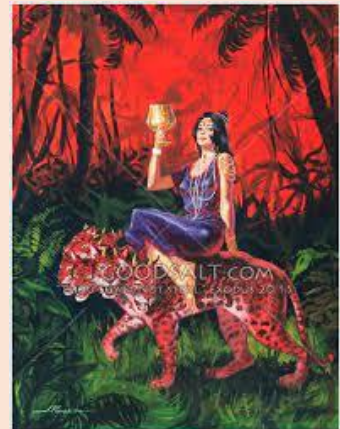
## Question #13: So what nation is the lamb-like beast of Revelation 13?

**Answer:** We should look for a nation that arose in the late 18<sup>th</sup> century or very early 19<sup>th</sup> century in a sparsely populated area, whose majority population was at least initially Protestant in their Christian outlook, and which would rise to the status of a global superpower. There is only 1 nation on earth which matches all of the specifications of this prophecy: the United States of America.

## Question #14: Who is Babylon in Revelation?

**Answer:** Read Revelation 17 because it's the chapter that reveals the most about Babylon in Revelation. Note the following specifications of Babylon in Revelation's prophecies:

- Babylon's name is derived from "Babel" in Genesis 11:1-9, which means "confusion" in Hebrew and "gate of/to God/gods" in Babylonian.
- Babylon is called "**MYSTERY.**" The Greek word for "mystery" is used in the New Testament to denote a Godly truth that has been hidden, but that has now been revealed to Christians. This means Babylon is symbolic in the end-time prophecies because if it were Iraq, for example, it would not be hidden to *anyone*.
- Babylon is a "**harlot.**" In Scripture, a symbolic woman represents the professed people of God. For the most part, a symbolic "harlot" represents God's professed people who apostatized and were thus viewed by God as committing spiritual adultery and going after other lovers (Isaiah 1:1, 21; Jeremiah 3:6-9; Ezekiel 16:1-3, 15-43; 20:30; Hosea 1:2; 2:5; 3:1; 4:15; 5:3; 6:10; and 9:1).
- Babylon is guilty of "**blasphemy.**" This is the religious sin of claiming rights that belong to God alone, such as the authority to forgive sins (Matthew 9:2-3; Luke 5:21) or the claim to be equal with God (Matthew 26:63-65; John 10:33, 36).
- Babylon is "**arrayed in purple and scarlet, and adorned with gold and precious stones and pearls**" (Revelation 17:4, NKJV). In Exodus 28:5-39, these colors are associated with the Old Testament priests' garments and especially the high priest.
- Babylon is also a "**city**" as well as a woman—a city indicating a political power as well.



All this evidence points unmistakably to the Antichrist—also called the "**man of sin**" (II Thessalonians 2) the "**little horn**" (Daniel 7), and the "**sea beast**" (Revelation 13).



## Question #15: What is the beast that the woman (Babylon) rides on?

**Answer:** Babylon sits on a 7-headed, 10-horned beast (Revelation 17:3, 7). Explorer III, Study Guide #8 showed that a symbolic beast represents a political power. Note that the woman sits on the beast, indicating that she is riding and thus controlling it. What the woman does, the beast also does. Therefore, we conclude that Babylon the harlot is the Papacy, and the beast represents all of the human kingdoms who have persecuted God's people and will do so again at the very end-time.

## Question #16: What are the 7 heads on this symbolic beast?

**Answer:** Revelation 17:9-10 identifies the 7 heads as “seven mountains” and also as “seven kings.” Note also that these are successive in nature, so the 7 mountains aren't the 7 hills on which ancient Rome was built. If the 7 heads are *both* 7 mountains *and* 7 kings, then the 7 mountains must be symbolic (since “kings” in Daniel and Revelation are usually kingdoms—see Explorer III, Study Guide #8). Symbolic mountains in Scripture denote kingdoms, according to Isaiah 2:2-3, Jeremiah 17:1-3, 31:23, 51:24-25, Ezekiel 17:22-23, and Daniel 2:35, 44. They must represent 7 kingdoms in history that have been well-known as persecutors of God's people. Most conservative scholars identify them as (1) Egypt; (2) Assyria; (3) Babylon; (4) Medo-Persia; (5) Greece; (6) Rome; and (7) Antichrist—based on the assumption that the point of reference is the apostle John's own day: **“Five have fallen, one is, and the other has not yet come”** (v. 10, NKJV). But there are 2 huge problems with this interpretation. *First*, Rome (if the “one is” is Rome) has been defunct for more than 1,500 years now; but the other kingdoms obviously followed each other in quick succession. *Second*, this view violates the use of the verb tenses in verses 8 and 10, as outlined below:

	<u>Verse 8</u>	<u>Verse 10</u>
PAST	“The beast...was...”	“Five have fallen...”
PRESENT	“The beast...is not...”	“...one is...”
FUTURE	“The beast...will ascend...”	“...the other has not yet come.”

How could Rome exist as a persecuting power when the beast is in the “is not” phase of activity? But if the historical point of reference were much closer to the end-time, the evidence lines up perfectly. Thus, the 7 kingdoms would be (1) Babylon; (2) Medo-Persia; (3) Greece; (4) Rome; (5) Antichrist Phase I; (6) Antichrist exists but no active persecution; and (7) Antichrist Phase II. Note also that Revelation 17:10 says that when the 7<sup>th</sup> head comes, **“he must continue a short time”** (NKJV).

## Question #17: What are the 10 horns on the beast in Revelation 17?

**Answer:** They are 10 kings representing 10 kingdoms that will exist only for “one hour” (v. 12, NKJV), indicating an unspecified short time during the end-time crisis. They might represent 10 regions on earth, 10 specific nations, or the number 10 may simply denote the completeness of all nations with their leaders. According to verses 16-17, the political nations will turn against Antichrist at the last minute when they evidently become convinced that they have been supporting the wrong side in the final conflict.